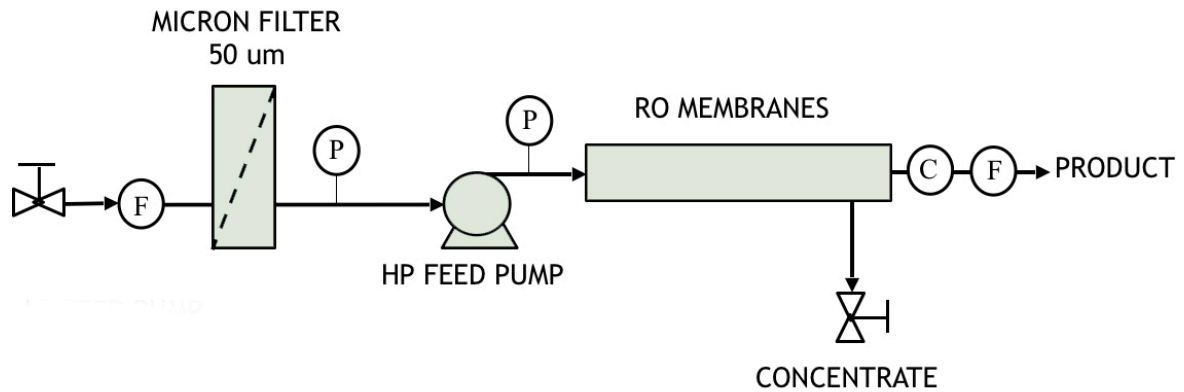




# 12,500, 25,000 AND 50,000 GPD BRACKISH WATER Reverse Osmosis Desalination Systems

Suitable for hotels, resorts and industrial customers, these brackish water desalination systems operate automatically and include an efficient high pressure pump. With a simple hookup to power and piping, the system is ready to go.



SYSTEM FEATURES	
<ul style="list-style-type: none"> <li>• Quick Setup</li> <li>• Easy Start and Stop Functionality</li> <li>• Safety Low Pressure and High Pressure Alarms</li> <li>• Includes All Equipment and Instrumentation Necessary for Normal Operation</li> <li>• Central Gauge Panel with Operating Information</li> <li>• Remote Start and Stop</li> <li>• Antiscalant Dosing</li> </ul>	<ul style="list-style-type: none"> <li>• VFD Control</li> <li>• Corrosion Resistant Materials</li> <li>• 316 SS Hardware and Piping</li> <li>• Micron Filter Housing Standard</li> <li>• Process and Sample Valves</li> <li>• Epoxy-Coated Steel Frame</li> <li>• Totally Enclosed Motors</li> <li>• Unmanned Operation</li> <li>• Efficient High Pressure Pump</li> <li>• Standard Permeate Tank Control Inputs</li> </ul>

### Specifications

- Standard Electrical Supply 230/460 Three phase power, 60hz (Other voltages available)
- Instruments
  - o Feed Flowmeter
  - o Product Flowmeter
  - o Low Pressure Sensor and Transmitter
  - o Membrane Pressure Sensor and Transmitter
  - o Product Conductivity Meter
- NEMA 4 Control Enclosure
- Brackish Membranes
- Designed and Assembled in the USA
- 1 Year Limited Warranty

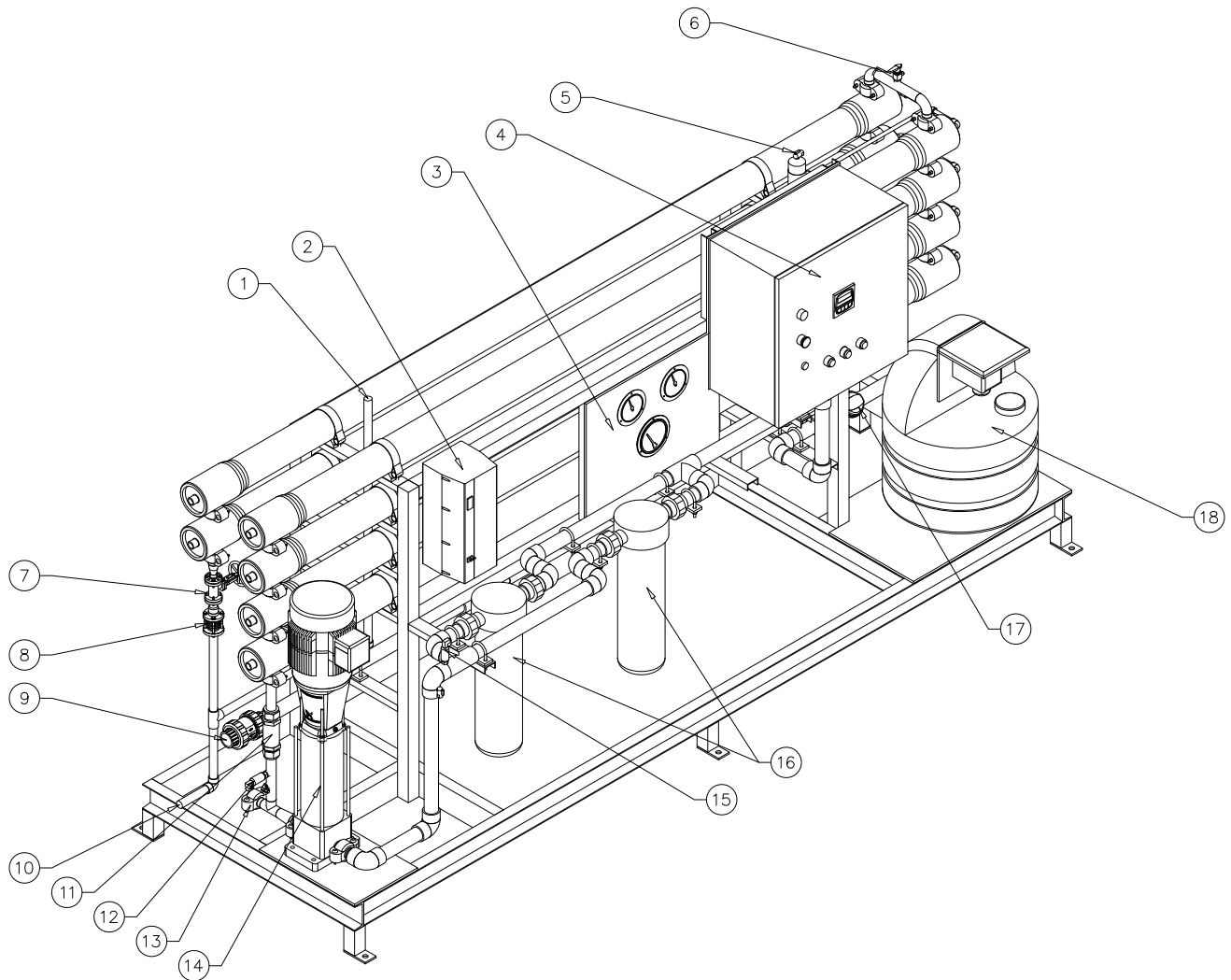
PROCESS PARAMETERS				
DESCRIPTION	UNIT	CAPACITY		
Production Rate @ 60Hz*	USgpd	12,500	25,000	50,000
Production Rate	m3/day	47.3	94.6	189.3
Vessel Array, (Size)	qty	2:1 (4")	4:2 (4")	2:1 (8")
Feed Flow	gpm	11.6	23.2	46.3
Brine Flow	gpm	2.9	5.8	11.6
Product Flow @ 75% Recovery	gpm	8.7	17.4	34.7
Feed Pressure at 2k TDS	psi	163.7	163.7	147.6
Product Quality	TDS	<100		
Skid Outside Dimensions	in.	144" L x 48" W x 72" T		
Skid Dry Weight	lbs	1,232	1,524	2,000
Power	kW	1.4	2.2	4.3
Specific Power*	kWh/Kgal	2.7	2.1	2.1

### Options

- Multimedia Pre-Filter – Recommended When Input Water Quality Is Poor
- Bag Filter – Recommended When Input Water Quality is Poor
- Antiscalant Chemical Dosing
- UV and Chlorination of Treated Product Water
- Product Storage Tank
- Feed Water Storage Tank
- Customization
- Spare Parts
- Consumables
- CIP System
- Pre and Post-treatment Chemical Dosing

\* 2000 mg/l TDS @ 25C

# 12,500, 25,000 AND 50,000 GPD UNITS



Example: 25,000 gpd BWRO System

## TAG DESCRIPTION

1	Brine Standpipe	10	Train Brine Outlet Terminal Point
2	High Pressure Pump VFD	11	High Pressure Pump Discharge Check Valve
3	Gauge Panel	12	High Pressure Pump Suction Pressure Transmitter
4	Control Cabinet	13	CIP Connection Point
5	Product Header System Air Bleed	14	High Pressure Pump
6	High Pressure System Air Bleed	15	High Pressure Pump Suction Pressure Transmitter
7	Brine Control Valve	16	Micron Filters
8	Brine Orifice	17	High Pressure Pump Suction Flowmeter
9	Train Product Outlet Check Valve & Terminal Point	18	Antiscalant Dosing, Pump and Tank

**PHYSICAL ADDRESS:** 157 Barber Road, Unit A, St. George, VT 05495, USA    **MAILING ADDRESS:** P.O. Box 131, Hinesburg, VT 05461, USA

**WEB:** [www.isi-water.com](http://www.isi-water.com)    **TEL USA:** 802.482.4006    **FAX USA:** 802.482.4007    **EMAIL:** [info@desalt.net](mailto:info@desalt.net)